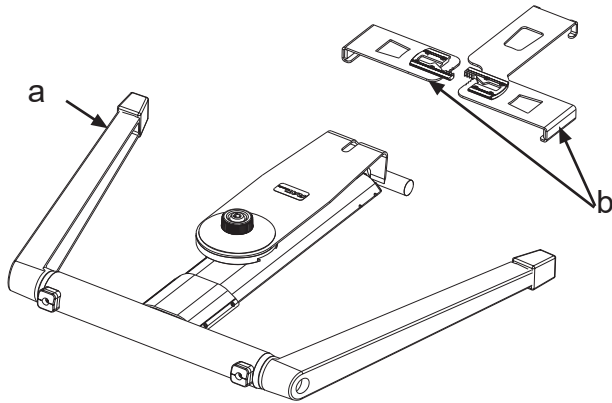


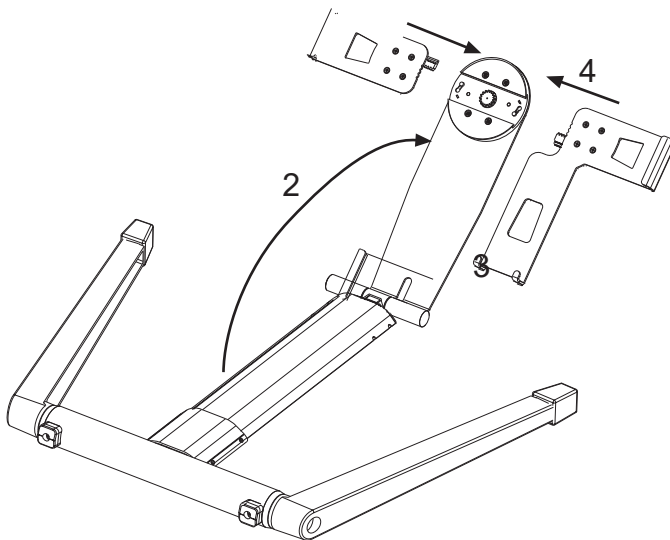
## Assembly



1 Check that the box contains all the parts you have ordered:

(a) Main stand

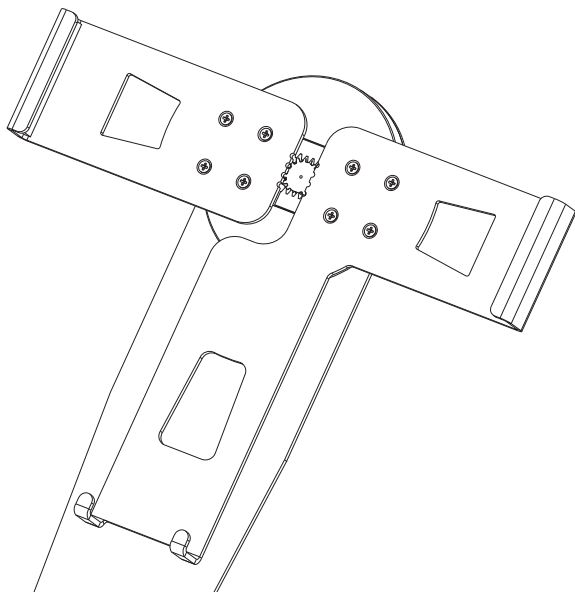
(b) A pair of tablet gripper arms appropriate to your tablet.



2 Flip the tablet holder up so that you can see its circular face.

3 Insert one of the tablet gripper arms into the slot on the face of the tablet holder. Push the gripper arm gently towards the gear wheel at the centre of the face; after some initial resistance you will feel the mechanism take over and pull the gripper arm until the tip of the arm touches the gear wheel.

4 Repeat step 3 with the other arm.



5 Turn the knob on the back half a turn clockwise and check that the gripper arms continue to move inwards.

6 The tablet holder is now ready to use. Insert your tablet so that the gripper arms engage it half way along each edge, then turn the knob clockwise until the gripper arms securely hold the tablet.

# The Z3 Tablet Stand

Operating instructions

## To unfold....



**1** Hold the top of the stem in the right hand and swing the tablet over to its unfolded position with the left hand.



**2** Keep hold of the stem with the right hand, and grasp the furthest foot with the left hand. Allowing the nearest foot to press against your forearm (A), push the right hand away and pull the left hand towards you. Continue until the base clicks into the fully opened position.



**3** Place the base on the floor, and hold it there with one foot. Pull up on the knobs below the tablet (NOT on the tablet) until the stand is at the desired height.

## To fold....



**3** Push down on the knobs below the tablet (NOT on the tablet) until the stem is fully compressed.



**2** Continue to push the knobs towards your feet so that the stem rotates to the floor.



**1** Hold the top of the stem in the right hand and swing the tablet over to its folded position with the left hand. When doing this, press on the cradle, NOT on the tablet.

## Please note....

The base can be unfolded the other way from that shown above. This gives improved stability when the stand is set very low.

When adjusting the height of the stand, always use the knobs below the cradle, NEVER the tablet. When adjusting the angle, always push on the top of the cradle or on the top of the tablet, NEVER pull on the tablet. Pulling on the tablet may cause damage to the tablet.

If, as a result of some bedding in, the friction in the tablet holder requires adjustment, remove the plug from the right hand knob using a flat blunt ended instrument, and then use a 4mm hexagon wrench to tighten the screw.

